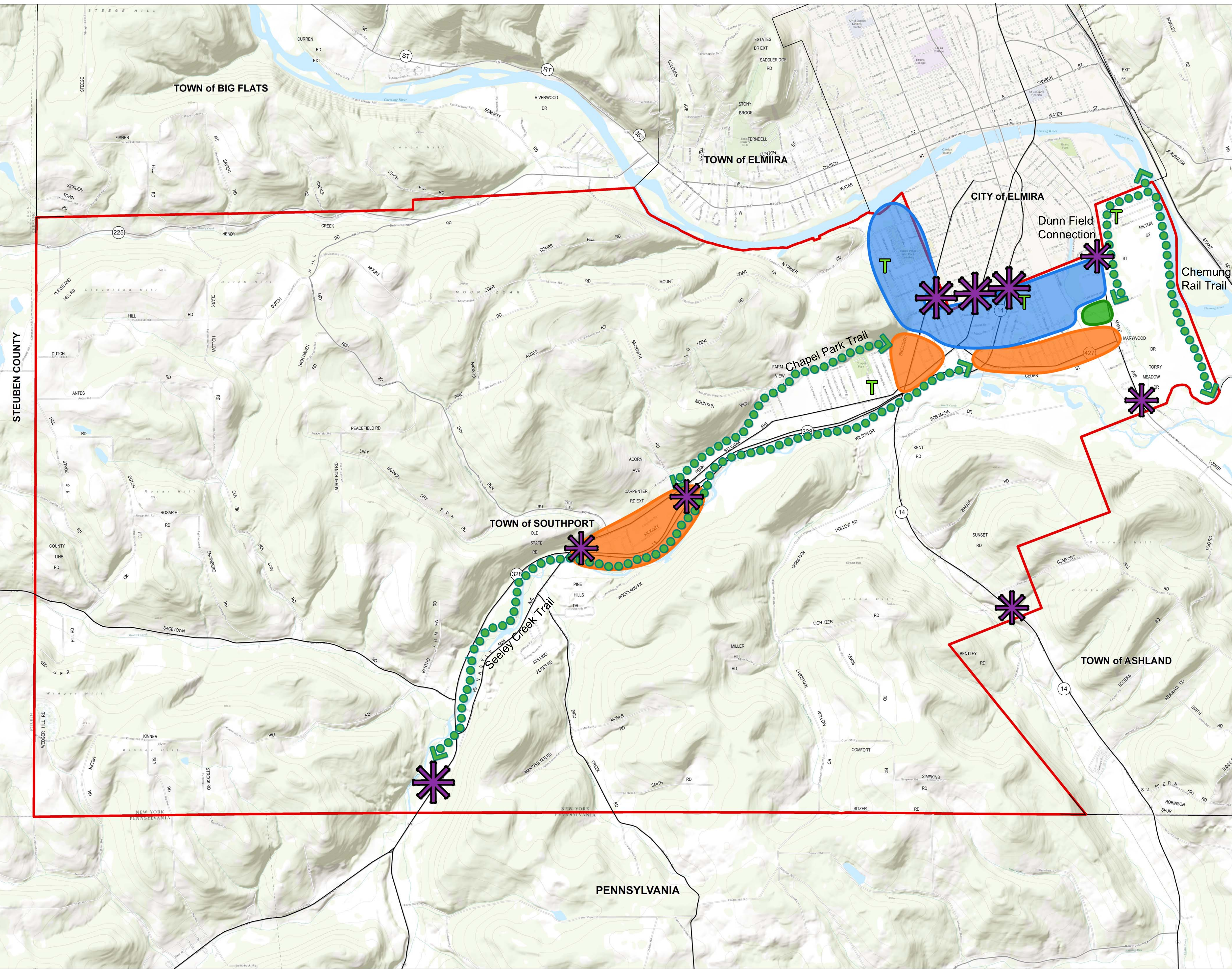


Figure 10
Future Land Use



Legend

- Mixed Use Town Centers
- Neighborhood Strategy Locations
- Pocket Park
- Southport Boundary
- Connections (Walkway, Bikeway, etc.)
- Tree Planting Program
- Gateways

Data Sources:
Town Boundaries: Chemung County GIS
Topographic Data: Esri World
Topographic Map

1 inch = 2,000 feet

Date: March 2014

Prepared by:



This map was computer generated using data acquired by Elan Planning, Design, and Landscape Architecture PLLC from various sources and is intended only for reference, conceptual planning, and presentation purposes. This map is not intended for and should not be used to establish boundaries, property lines, location of objects, or to provide any other information typically needed for construction or any other purpose when engineered plans or land surveys are needed.