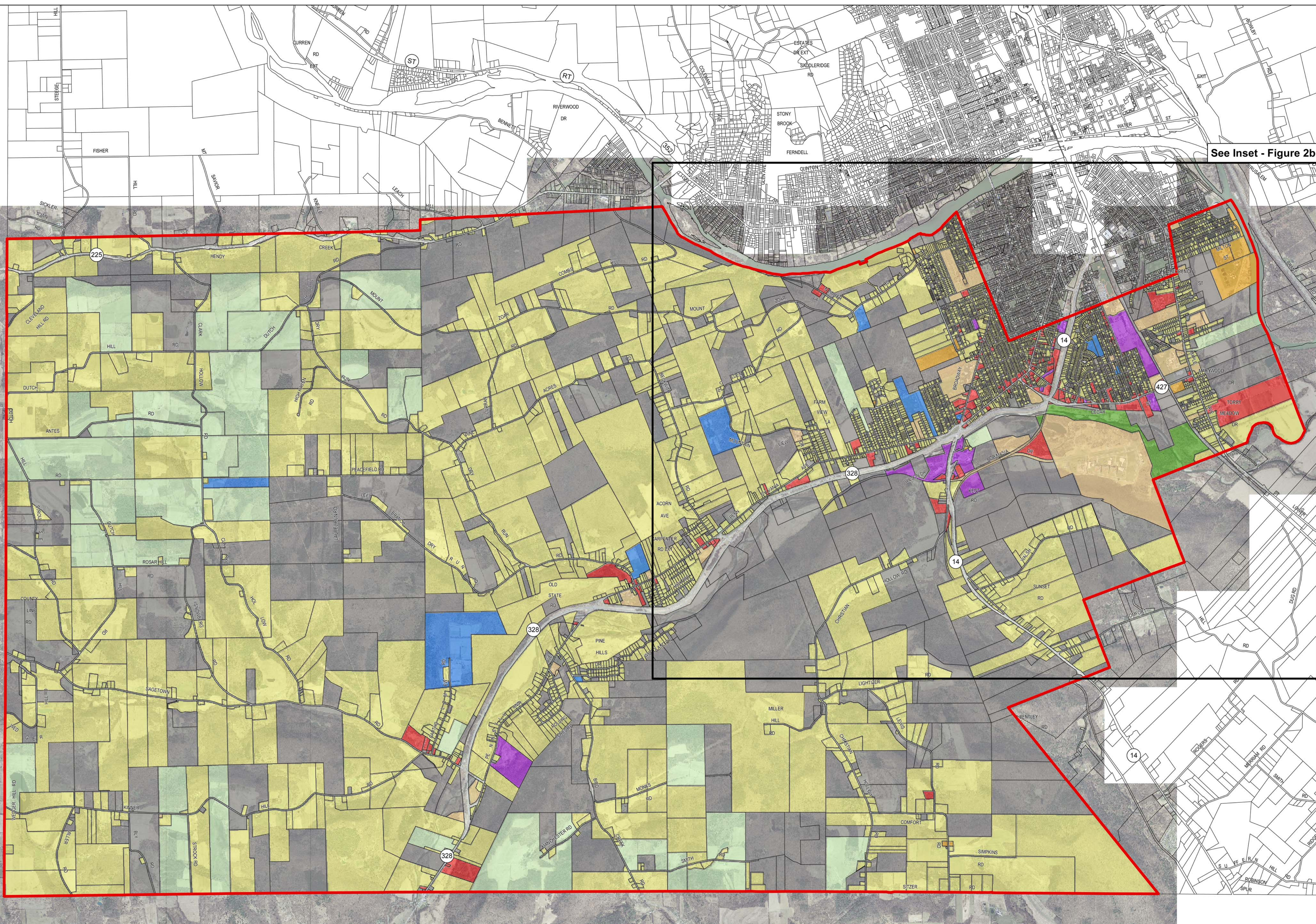


**Town of Southport  
Comprehensive Plan  
Chemung County, NY**

**Figure 2a  
Existing Land Use - Town**

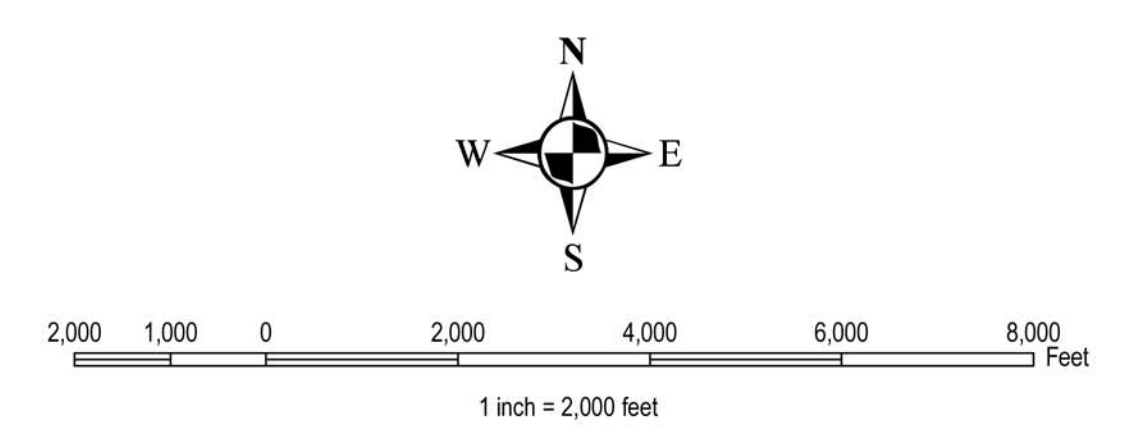


Land Use	Parcel Count	Total Acres	% of Total Acreage
Agriculture	27	2,180	10.2
Residential	3,110	10,424	48.7
Vacant	1,000	7,725	36.1
Commercial	134	258	1.2
Recreation	12	310	1.4
Community Service	55	222	1.0
Industrial	9	84	0.4
Public Service	25	107	0.5
Conservation	1	107	0.5

**Legend**

- Southport
- Land Use
- Agriculture
- Residential
- Vacant
- Commercial
- Recreation
- Community Service
- Industrial
- Public Service
- Conservation

Data Sources:  
Town Boundaries, Tax Parcels, Land Use:  
Chemung County GIS



Date: March 2014

Prepared by:



This map was computer generated using data acquired by Elan Planning, Design, and Landscape Architecture PLLC from various sources and is intended only for reference, conceptual planning, and presentation purposes. This map is not intended for and should not be used to establish boundaries, property lines, location of objects, or to provide any other information typically needed for construction or any other purpose when engineered plans or land surveys are needed.