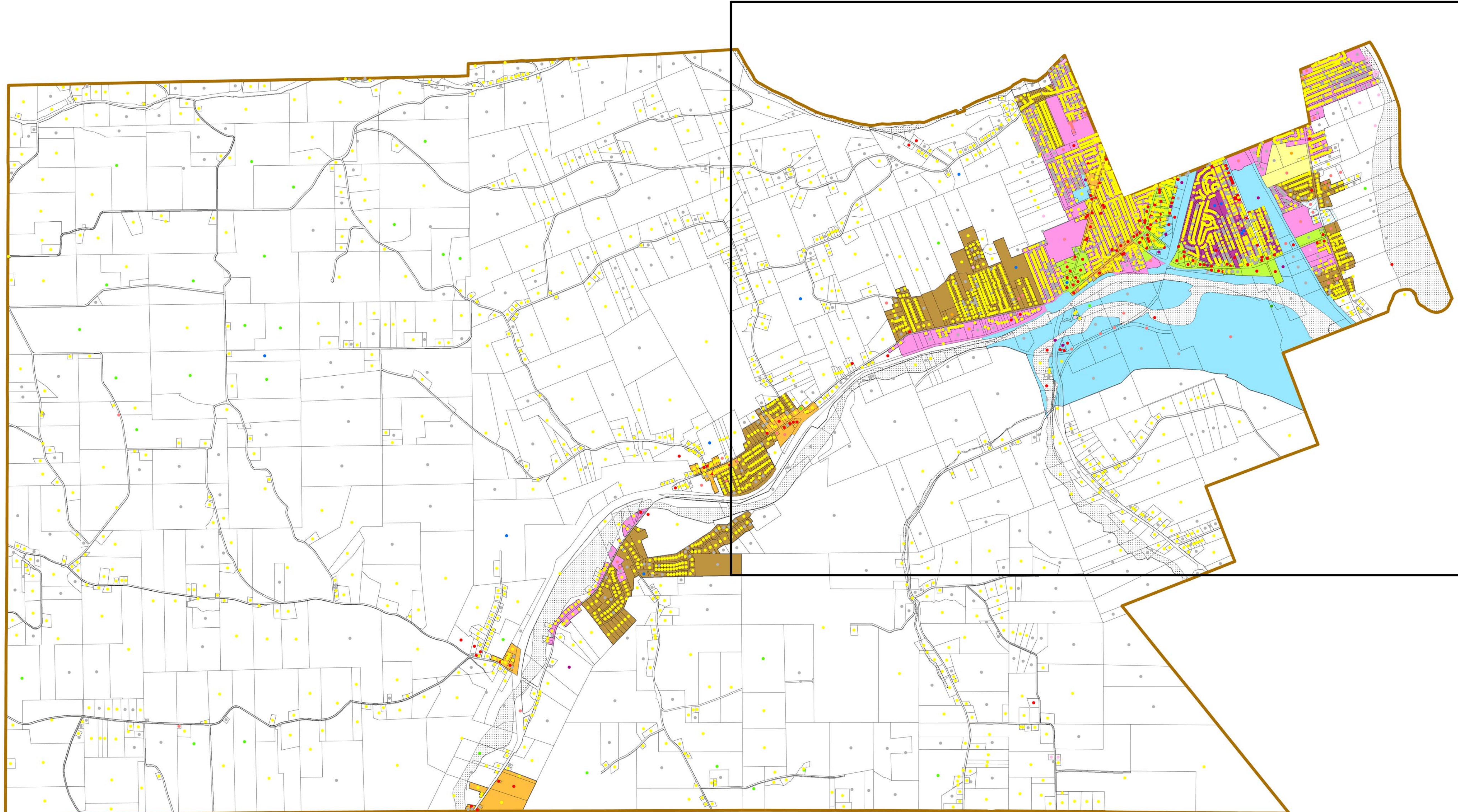


**Town of Southport
Comprehensive Plan
Chemung County, NY**

**Figure 4a
Zoning with Existing
Land Use - Town**

See Inset - Figure 4b



Legend

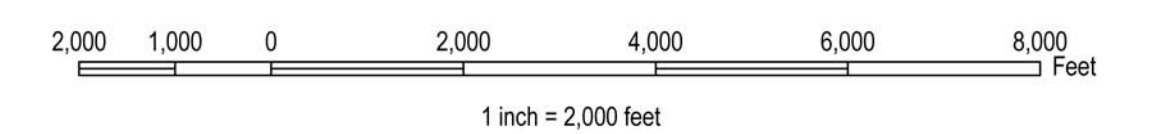
Parcel Land Use

- Agriculture
- Residential
- Apartment
- Vacant
- Commercial
- Recreation/Entertainment
- Commercial Services
- Industrial
- Public Services
- Wild, Forested, Conservation Lands, Public Parks

Zoning

- ▨ Conservation District
- ▨ Agricultural / Residential
- ▨ Commercial Neighborhood
- ▨ Commercial Regional
- ▨ Industrial
- ▨ Industrial Transition
- ▨ Multiple Residential
- ▨ Residential 1
- ▨ Residential 2
- ▨ Residential 3

Data Sources:
Town Boundaries, Tax Parcels, Land Use,
Zoning: Chemung County GIS



Date: March 2014

Prepared by:



This map was computer generated using data acquired by Elan Planning, Design, and Landscape Architecture PLLC from various sources and is intended only for reference, conceptual planning, and presentation purposes. This map is not intended for and should not be used to establish boundaries, property lines, location of objects, or to provide any other information typically needed for construction or any other purpose when engineered plans or land surveys are needed.